

QY16D FULL HYDRAULIC TRUCK CRANE

- ◆ QY16D truck crane adopts self-made truck crane specific chassis,with two kinds of engines for option.Shanghai 6C215-2 or Hangzhou engine WD415.21 or SC8DK230Q3 (Euro III) .
- ◆ 4-section telescopic boom of all-round angle hexagonal cross-section has powerful lifting capacity.The main boom gives a maximum lifting height of 30.7m.The main boom plus jib offer a maximum lifting height of 38.5m.Every performance is in the lead in China.
- ◆ A gravity lowering device equipped in winch system facilitates improving working efficiency;constant closed external meshing brake makes operation safe and reliable.
- ◆ Side-mounted jib,single cylinders for front support elevating,fully hydraulic drive and double H-shaped outriggers.
- ◆ The frame with box structure and torsion resistance,and wide outrigger extension greatly improve load lifting capacity.
- ◆ Guide roller meticulously designed avoids rope-disorder.
- ◆ Swing system with cycloid cylindrical lantern gear reducer can absorb shock effectively,run smoothly.
- ◆ Driver cab is equipped with damping adjustable seat and adjustable steering wheel.Air conditioner is available.
- ◆ Newly designed operator cab is spacious,comfortable and broaden view.
- ◆ Air circuit with a dryer improves its reliability greatly.
- ◆ Well-equipped safety devices,such as hoist height limiter and working radius indicator.Illuminators facility operation at night.
- ◆ The vehicle,equipped with devices for using in plateau,suits many kinds of working environment.

XUZHOU CONSTRUCTION MACHINERY GROUP IMP.&EXP.CO.,LTD

Add:XCMG Headquarters,Xuzhou Economic Development Zone,Jiangsu,China 221004

Tel:European & American Dept. +86-516-87739238

Middle East Dept. +86-516-87739252

Asian Dept. +86-516-87739234

Centel Asian Dept. +86-516-87739239

American & Oceania Dept. +86-516-87739237

African Dept. +86-516-87739222

Fax: +86-516-87739230

E-mail:sinomac@public.xz.js.cn

www.xcmg.com

Please contact with our district agent:

Materials and specifications are subject to change without notice.



QY16D

HYDRAULIC TRUCK CRANE

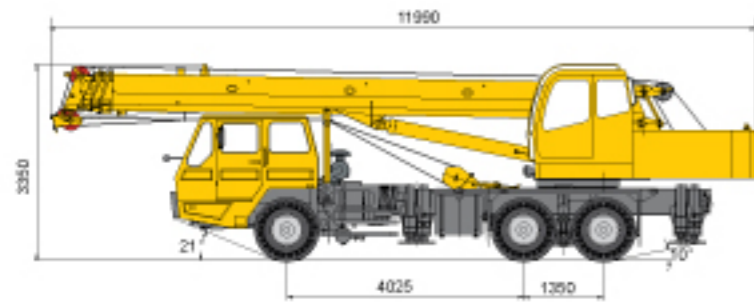


Max. Total Rated Lifting Load	16t
Full-extend Boom Lifting Height	30.7m
Full-extend Boom+Jib Lifting Height	38.5m

QY16D

FULL HYDRAULIC TRUCK CRANE

Overall length	11990mm
Overall width	2500mm
Overall height	3350mm



▲ Outline dimensions

Dead weight in travel state	24000kg
Axle load	
Front axle	6400kg
Rear axle	17600kg

Engine model	6C215-2(Euro II)	WD415.21(Euro II)	6C8DK230G3(Euro III)
Engine rated output	156(2200kW)(r/min)	155(2200kW)(r/min)	170(2200kW)(r/min)
Engine rated torque	790/1400N.m(r/min)	820/1400N.m(r/min)	830/1400N.m(r/min)
Max travel speed	2200r/min	2200r/min	2200r/min

Max travel speed	70km/h	70km/h	70km/h
Min turning diameter	20000mm	20000mm	20000mm
Min ground clearance	270mm	270mm	270mm
Approach angle	21°	21°	21°
Departure angle	10°	10°	10°
Braking distance(at 30km/h)	9.5m	9.5m	9.5m
Max gradeability	24%	26%	26%
Fuel consumption of 100km	~35L	~35L	~35L

Max total rated lifting load	16t
Min rated working radius	3m
Turning radius at swing table tail	3.12m
Max load moment	
Base boom	696kN.m
Full-extend boom	388kN.m
Full-extend boom+Jib	254kN.m
Outrigger extension distance	
Longitudinal/Lateral	4.6/5.4mm
Lifting height	
Base boom	9.9m
Full-extend boom	30.7m
Full-extend boom+Jib	38.5m

Boom elevating time	
Rising boom	60s
Full extending	95s
Max slewing speed	2.5r/min
Outrigger telescoping time	
Outrigger beam extending/retracting synchronously	28/26s
Outrigger jack extending/retracting synchronously	32/30s
Hoisting speed(single rope, 2nd layer)	
Main winch with full load/no load	54/100r/min
Auxiliary winch with full load/no load	54/100r/min

4-section hexagonal telescopic boom



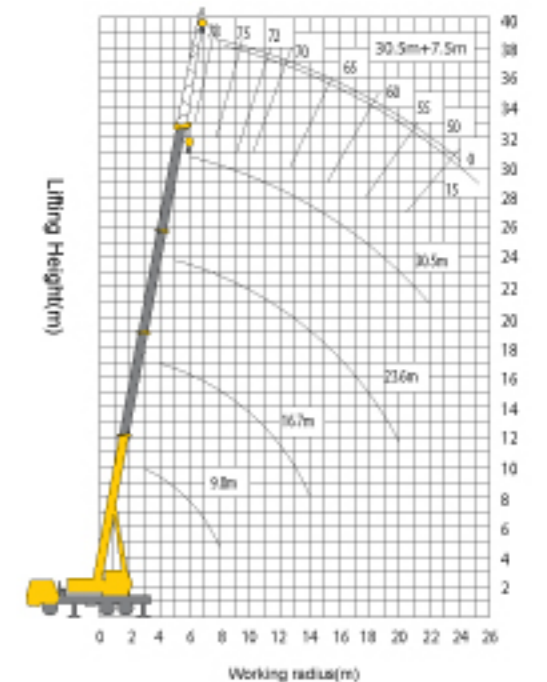
Full-extend outrigger with boom at the side or the rear

Working radius m	Base boom 9.9m		Mid-extend boom 16.7m		Mid-extend boom 23.6m		Full-extend boom 30.5m	
	Lifting Load (kg)	Lifting Height (m)	Lifting Load (kg)	Lifting Height (m)	Lifting Load (kg)	Lifting Height (m)	Lifting Load (kg)	Lifting Height (m)
3.0	16000	9.9						
3.5	16000	9.6						
4.0	16000	9.4	12000	16.9				
4.5	14800	9.0	12000	16.7				
5.0	14000	8.6	11500	16.5	6500	23.8		
5.5	11800	8.2	10500	16.3	6500	23.6		
6.0	10100	7.7	9700	16.1	6500	23.5	3850	30.7
7.0	7800	6.5	8200	15.6	6000	23.2	3850	30.4
8.0	6200	4.6	6600	15.0	5800	22.8	3850	30.1
9.0			5400	14.3	5300	22.3	3500	29.8
10.0			4600	13.5	4700	21.8	3400	29.4
12.0			3100	11.3	3400	20.6	3300	28.5
14.0			2200	8.1	2580	19.1	2600	27.5
16.0					1900	17.3	2000	26.2
18.0					1500	14.8	1600	24.8
20.0					1100	11.6	1200	23.0
22.0							1000	20.9
Max boom angle	65°		74°		77°		79°	
Min boom angle	22°		26°		28°		42°	
Weight of hook block	216kg							
Parts of line	6		5		3		1	

Boom Angle	Boom 30.5m+Jib 7.5m			
	Jib offset			
	0°		15°	
	m	t	m	t
78°	7.9	2000	9.5	1850
75°	9.8	2000	11.4	1750
72°	11.7	1900	13.3	1600
70°	12.9	1800	14.5	1500
65°	16	1650	17.5	1400
60°	18.9	1300	20.3	1200
55°	21.7	800	22.9	700
50°	24.2	400	25.4	350
Weight of hook block	46kg			
Parts of line	1			

Notes:

- ◆ The value of rated load in the table is the largest load that the crane can work on the flat and hard ground.
- ◆ The rated weight include the weight of the hook and the other equipment in the table.
- ◆ The work scope in the table is an actual value which includes the formed value of the boom.
- ◆ The load value of the hook should reduce 400kg when the top of the main boom is fixed up subsidiary boom.
- ◆ The lift capability of the single pulley at the top of the boom is same to the 30.5m main boom, but its top limit is 2t.
- ◆ You must set up the legs safely before you begin to work.
- ◆ Permitting to work under wind force 6.



▲ Lifting Height Area